

VISUAL ARTS SHOW

JUNE 2026

INTERNATIONAL GROUP EXHIBITION

cistaarts.com/groupexhibitions/unfixed



www.cistaarts.com

UNFIXED:

Between Form and Dissolution

VISUAL ARTS SHOW | JUNE 2026

INTERNATIONAL GROUP EXHIBITION

cistaarts.com/groupexhibitions/unfixed

Forms are often understood as stable entities: defined, recognisable, and complete. Yet much of our experience unfolds elsewhere, in moments of transition, uncertainty, and gradual change. *Unfixed: Between Form and Dissolution* brings together artists whose works inhabit these unsettled conditions, exploring what emerges when structures loosen, boundaries blur, and fixed meanings begin to shift.

The exhibition considers form not as a final state but as an ongoing process. Across diverse media and approaches, the participating artists engage with movement, fragmentation, layering, erosion, repetition, and transformation. Some works explore material instability, where surfaces dissolve, accumulate, or evolve over time. Others attend to psychological, social, environmental, or cultural conditions that resist certainty and remain open to reinterpretation.

Rather than presenting dissolution as an endpoint, the exhibition approaches it as a generative space, one in which new relationships, possibilities, and understandings may emerge. The works gathered here occupy the threshold between presence and absence, coherence and dispersal, revealing the dynamic nature of forms that are never entirely fixed.

Presented on CISTA ARTS' online platform, *Unfixed* also reflects on the conditions of contemporary viewing. Encountered through the screen, images are continually reframed, revisited, and recontextualised. In this environment, meaning remains fluid, shaped by movement, attention, and exchange.

Together, the artists in this exhibition invite us to dwell within states of becoming, where uncertainty is not a lack of resolution but a space of possibility, and where form itself remains open, provisional, and alive.

The artists whose work features in this exhibition are: Asya Dobrovolski, Austin Tase, Camelia Pîrvu, Christina Eberhart, Diana Cîrjaliu Meliu, Elizabeth Benson, Ember Wanbo Li, Hallie Mueller, HeresAndHolti, Jane McCloskey, Kate Spragg, Lisa Ange Velez, Monika Tkaczyk, Mossamé, Rosie Leventon FRSS, Ryu Satake, Sang-a Oh, Susan Williams, Ndubuisi Princewill, Xixi Xu, Xusheng Yue, Yun Wen.



scana me
to explore the
exhibition.

Asya Dobrovolski

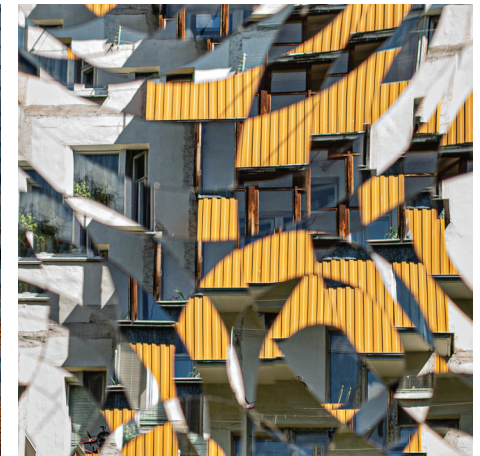
Asya Dobrovolski (b. 1992) is a multidisciplinary artist working across photography, mirror, embroidery, and mixed media. Born in Siberia, Russia, she began her career in reportage photography, documenting remote regions and social environments from the Arctic to Latin America. At 18, she became a member of the Union of Photo Artists of Russia. Her background in documentary observation continues to shape her artistic practice, which explores perception, memory, and urban identity through fragmented and reflective image structures. She studied at the Free Workshops of the Moscow Museum of Modern Art (MMOMA) and ICA Moscow. Her works are held in the Russian Museum and private collections internationally.

My work relates to *Unfixed* through an exploration of urban space as a temporary and unstable construct. Working across photography, mirror, video, and mixed media, I use reflective surfaces as active agents that fracture perception and unsettle fixed viewpoints. In *Archevolution*, Soviet and post-Soviet architecture appears through layered, mirrored images where bright facades function as fragile masks concealing anonymity and psychological emptiness. The city emerges as a shifting field of overlapping histories and identities rather than a coherent structure. By destabilizing the image and implicating the viewer within it, my practice engages with ambiguity, fragmentation, and unresolved presence.

dobrovolskaya.photo



Asya Dobrovolski, *Archevolution 26*, 2017–2019, Photo printing on Dibond, 100 × 100 cm



Asya Dobrovolski, *Archevolution 57*, 2017–2019, Photo printing on Dibond, 100 × 100 cm

Austin Tase

Austin Tase is a fine art photographer whose work explores identity, ritual, memory, and cultural heritage through cinematic imagery and atmospheric storytelling. Drawing inspiration from documentary traditions and contemporary African visual culture, their practice combines portraiture, symbolism, and movement to create emotionally layered narratives. Their recent work focuses on the relationship between performance, spirituality, and collective memory within traditional communities. Through photography, they aim to preserve cultural presence while reimagining ritual spaces through a contemporary fine art perspective.

As a fine art photographer, my practice explores memory, ritual, identity, and cultural continuity through atmospheric portraiture and documentary-inspired imagery. Working primarily with natural light, movement, and cinematic composition, I create photographs that exist between reality and symbolism. My work focuses on transforming lived cultural experiences into emotional visual narratives. In relation to the theme, this series examines the Ekpe Festival as both performance and spiritual inheritance, exploring how masks, gesture, and communal ritual preserve ancestral presence within contemporary society while questioning the relationship between identity, transformation, and collective memory.

drive.google.com/drive/folders/1uFRGzCZSbUPgURAJHQ-Rj1qIWWiNECM4?usp=drive_link



Austin Tase, Run Towards the Ancestors, Photo printing

Camelia Pîrvu

Camelia Pîrvu is a Romanian visual and textile artist whose practice explores the intersection of raw materiality and structural logic. With a background in engineering, she approaches mosaic, textiles, and mixed media as processes of construction rather than ornament. Her work investigates the tension between rigid frameworks and organic emergence, utilizing stone, oxidized metal, glass, and fibers to create tactile narratives. Through fragmentation, layering, and material transformation, her works reflect on instability, balance, and the shifting nature of form. She is currently expanding her international presence, developing projects that challenge the boundaries of traditional media.

My practice explores states of transition, where form remains unstable and in flux. Working with mosaic and mixed media, I use fragmentation, layering, and material tension to create structures that suggest both construction and disintegration. Rather than resolving into fixed images, my works remain open—suspended between coherence and dissolution, reflecting the continuous transformation of matter.

camipirvuart.ro



Camelia Pîrvu, Emergence, 2026, Stone, oxidized metal and mixed media mosaic, 31 × 64 × 5 cm



Camelia Pîrvu, Nest in the Crevice, 2026, Stone, oxidized metal and mixed media mosaic with glass beads and paper elements, 30 × 40 × 5 cm

Christina Eberhart

In a world choreographed by notifications and algorithms, time has been reduced to a resource to be measured, optimised and extracted. Against this dominant regime of attention Christina Eberhart's work proposes a silent yet profound resistance. 'As it is now' is the outcome of a research residency in which the artist set out to explore time and produce works that reflect her understanding of it; Eberhart describes her practice as 'valuable time made visible.' __*Sandra Sánchez.*

My recent work hints at the visible and hidden aspects of a painting. It relates to time made visible as lived experience and time as emergent and fluid. One's lived experience as a temporary pattern of folds that can be rearranged and is fluid.

christinaeberhart.com



Christina Eberhart, *It Could Always Be Otherwise*, 2026,
Acrylic on paper, 90 cm height x variable length



Christina Eberhart, *Purple Rain*, 2026,
Acrylic on canvas, 95 x 95 cm

Diana Cîrjaliu Meliu

Diana Cîrjaliu Meliu is a Romanian ceramic artist and practicing psychiatrist whose artistic journey reflects a profound commitment to lifelong creativity and transformation. Returning to her early passion for ceramics at the age of 57, she has developed a parallel artistic career distinguished by sensitivity to form, material, and inner expression. Beginning her formal artistic path at a stage in life when many choose retirement, Diana Cîrjaliu Meliu embodies the transformative power of change. Her ceramic practice bridges traditional craftsmanship with personal exploration of clay, metal or glass, creating works that reflect both structural harmony and emotional depth. With two solo exhibitions and multiple participations in national and international group exhibitions, her dual career allows for a unique dialogue between science and art, where the understanding of the human mind informs a tactile and visual language expressed through clay. Her work often explores themes of identity, politics, social issues, transformation, balance and the human psyche, subtly informed by her medical background in psychiatry.

The work begins from the image of a fractured violin, its body broken into fragments that seem to drift away from a once-coherent whole, entering a visible process of dissolution. The instrument's structure no longer holds together; instead, it exists in a suspended state between collapse and possible reconfiguration. Yet the strings—the essential carriers of vibration—remain intact, suggesting an unseen continuity that persists through material rupture. This tension between the destruction of form and the endurance of function opens a reflection on the relationship between appearance and essence. Although the physical body is altered, the sonic potential is not erased. Sound, as an immaterial expression, retains its purity, implying that essence is not entirely dependent on the integrity of the form that contains it. The work thus becomes a meditation on the resilience of meaning: what is essential does not vanish with the degradation of its support. In this sense, dissolution is not only an act of destruction but also one of release—a detachment from the constraints of a fixed configuration. The object resists closure, and its meaning remains fluid, open, oscillating between fragility and permanence.

dianacirjaliu.ro



Diana Cîrjaliu Meliu, *Still Mendelssohn*, 2024, Clay, 16 x 10 x 32 cm

Elizabeth Benson

Elizabeth Benson is a material-led artist working with cloth as a responsive system. Using plant tannins, iron and natural fibres, her practice investigates how material behaviours unfold through conditions of moisture, time and exposure. Rather than imposing fixed composition, she works through processes of reaction, allowing colour and form to emerge from interaction between fibres, minerals and environment. Cloth becomes a site of ongoing material afterlife, where structure, process and environment remain in continuous negotiation.

Elizabeth Benson's work explores cloth as an unstable and reactive surface shaped through tension, gravity, staining, and material exchange. In works such as *Confluence* and *Surface Tension*, natural dyes, iron, and layered fabrics interact through processes of seepage, compression, and gradual transformation. Forms emerge temporarily before dissolving into softer, uncertain boundaries. Rather than fixed compositions, the works exist in states of suspension, held between structure and dispersal, containment and release. Through slow material processes, Benson approaches cloth as a shifting terrain where instability, fragmentation, and unresolved change remain visible within the surface itself.

elizabethbensonart.com



Elizabeth Benson, *Surface Tension*, 2026, Textile, 70 x 80 cm



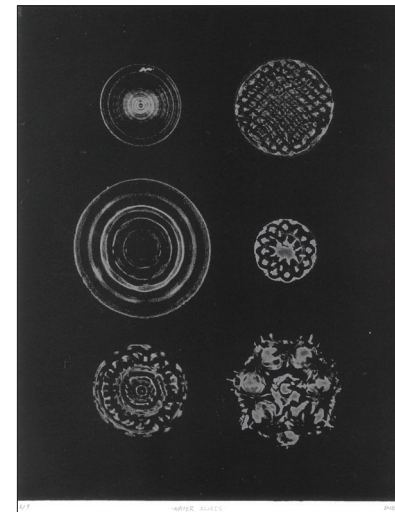
Elizabeth Benson, *Confluence*, 2026, Textile, 70 x 80 cm

Ember Wanbo Li

Ember Wanbo Li is an interdisciplinary artist and designer merging art, design, and engineering to explore science visualization and kinetic installations. Holding an MA in Art and Science (Distinction) from Central Saint Martins and a PGDip in Visual Communication from LCC, Ember creates multisensory environments bridging digital-analogue techniques. Their practice extends into immersive performance and theatre, where light, sound, and fluid dynamics become scenographic elements. Exhibited and performed internationally across London, Athens, and China, Ember's work transforms complex concepts into site-specific experiences, reflecting a deep commitment to material experimentation and the innovative evolution of immersive storytelling.

My practice functions at the intersection of scientific inquiry and sensory experience, investigating the hidden patterns of the natural world. Utilizing cymatics, fluid dynamics, and generative processes, I translate abstract phenomena into tangible, multisensory environments. My work merges digital-analogue techniques with kinetic elements to explore the tension between order and chaos. By employing materials like light and sound as sculptural tools, I create site-specific installations that challenge human perception. Ultimately, I aim to visualize the invisible, transforming complex scientific data into emotionally resonant, immersive narratives that reconnect the audience with the poetic rhythms of physical matter.

emberlee.cargo.site



Ember Wanbo Li, *Water Slices I*, 2025, Intaglio Print & Ink on Paper, 420 x 497 cm



Ember Wanbo Li, *Water Slices II*, 2025, Acrylic & LED Light with Wood Frame, 30 x 30 x 4 cm

Hallie Mueller

Hallie Mueller is a practicing artist and teacher from the northeastern United States now living in Phoenix, Arizona. With an extensive background in rock climbing and backpacking, much of her work explores her deep sense of connection to the natural world. Over the past five years, however, it has markedly shifted from whimsical and imaginative depictions of nature to more solemn and temperate interpretations shaped by a climbing accident, the Covid pandemic, and motherhood.

Our digital culture today often feels fixated on binary sorting. With pressures to agree or disagree, like or dislike, there's little space to wonder in the gray or appreciate the necessity of confusion as a step towards shaping a more complex stance. Yet artistically and even personally, I have always thrived in this intermediary zone, looking for patterns or connections between disparate forms, and especially when those forms defy our cognitive dissonance: two ideas intentionally kept apart. While I can still see beauty in landscapes that announce themselves as real places, I see even more in those with ambiguous layers of projected human thought.

halliemueller.com



Hallie Mueller, Backlash, 2026, Oil on Canvas, 101.6 x 127 cm



Hallie Mueller, Rugged Synchronicity, 2026, Oil on Canvas, 60.96 x 76.2 cm

HeresAndHolti

HeresAndHolti is the collaborative practice of Amsterdam-based artists Marion Heres and Eric Holtman. Working across moving image, sound, immersive storytelling, and digital environments, they create poetic and psychologically charged narrative worlds that explore instability, memory, transformation, and shifting systems of meaning. Their ongoing Zeefluweel series follows symbolic figures through fragmented landscapes where reality, dream logic, and social structures begin to blur. Rather than offering fixed narratives, their work invites viewers into liminal spaces shaped by ambiguity, emotional resonance, and unstable perception. Through layered imagery and atmospheric storytelling, HeresAndHolti investigate contemporary experiences of displacement, repetition, and psychological drift.

HeresAndHolti create immersive moving-image works, installations, and hybrid narrative environments that explore unstable states of perception, memory, exclusion, and transformation. Working across physical and digital space, they construct psychologically charged worlds where fiction, symbolic figures, and fragmented social realities intersect. Their practice often inhabits liminal territories in which boundaries between inner and outer worlds begin to dissolve. Through layered imagery, sound, immersive environments, and nonlinear storytelling, they investigate ambiguity, displacement, repetition, and shifting systems of meaning. Rather than presenting fixed narratives, HeresAndHolti invite viewers into emotionally resonant spaces shaped by instability, uncertainty, and continual transformation.

heresandholti.com



HeresAndHolti, Zeefluweel in the Land of AI, March 18th, 2026



HeresAndHolti, Zeefluweel in the Land of the Scapegoats, May 5th, 2026

Jane McCloskey

Jane McCloskey is a figurative artist based in Dublin, originally from Co. Monaghan. Working primarily in acrylic, oil pastel, and drawing, her practice explores the human figure as a site of emotional and psychological depth. She is interested in cycles of light and darkness, hibernation, reflection, and renewal, using material layering to mirror inner transformation. Working from live models, she allows gesture and presence to guide the work, capturing vulnerability, resilience, and quiet emergence. Her paintings reflect the tension between stillness and becoming, where hope is carried within the shifting states of form, colour, and atmosphere.

I am a figurative artist, art teacher, and Child and Adolescent Art Therapist with the HSE, based in Dublin and originally from County Monaghan. My practice explores the human form as a vessel for emotion, memory, and transformation. Working primarily with acrylic, oil pastel, and drawing materials, I build layered surfaces that hold both fragility and strength. Conceptually, my work examines women's lived experience, resilience, grief, and renewal, often through themes of light and darkness. I am interested in presence, intuition, and the quiet power of observation, creating images that invite reflection, connection, and emotional recognition and shared human experience.

[instagram/janemccloskeyart](https://www.instagram.com/janemccloskeyart)



Jane McCloskey, Holding On to Every Version of Herself, 2026, Acrylic, 55 x 55 cm



Jane McCloskey, Sadie's Pause, 2026, Acrylic, 80 x 60 cm

Kate Spragg

An artist working across printmaking, painting and poetry, exploring themes of connection, resilience and wellbeing. Her practice combines visual imagery, metaphor and poetic fragments to create layered narratives inspired by personal experience and wider social themes, including mental health, identity and grief. Alongside her creative practice, she works as a counsellor and wellbeing practitioner, leading inclusive art workshops and community projects that encourage expression, reflection and connection. Her work is shared through exhibitions, workshops and spoken-word performance.

Seaside Sangronian combines printmaking, painting and a narrative from poetry to explore transformation, impermanence and identity through a move from a seaside town to a town famous for making glass. Inspired by the process of sand becoming glass, the work centres on a sand timer containing a seashell, a symbol of memory, erosion and renewal. Referencing both natural and emotional landscapes, the piece reflects how experiences reshape the self over time. Layers of texture and symbolic imagery mirror the poem's themes of fragility, resilience and continual change. The shell, once protective and now displaced, becomes a metaphor for personal growth and adaptation. Through material and metaphor, the work invites reflection on how we carry traces of our past while continually evolving.

poetrypaper.my.canva.site/poetry-paper



Kate Spragg, Seaside Sangronian Print, 2025, Painting and Lino Print, 14.8 x 21 cm

Lisa Ange Velez

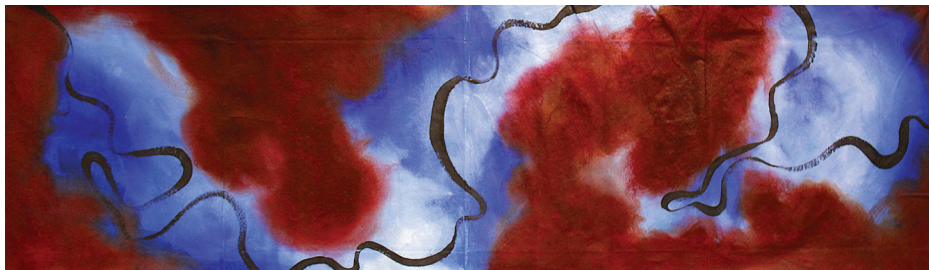
Lisa Ange Velez (b. 2003, Lyon, France) is a French artist currently based in Canterbury, UK. Working primarily in painting, her interdisciplinary practice examines the psychological navigation of lived negative experience through the tension between control and chaos, alongside inner antagonism and displacement. Her work has been exhibited at venues including the Canterbury Cathedral Lodge and acquired by private collectors. She completed a BA (Hons) in Fine Art at the University for the Creative Arts, graduating with a 2:1, and is currently undertaking a Master's degree in Fine Art at the same institution, due for completion in September 2026.

My practice explores unstable psychological states shaped by constant digital connectivity, where presence dissolves into internal fragmentation. Working across painting and photography, I construct speculative, abstract-architectural landscapes that hover between coherence and dispersal. These works resist resolution, giving form to tension, cyclical thought, and perceptual disorientation. Balancing control and chaos, analogue and digital processes, I engage with states of becoming—where forms loosen, boundaries blur, and meaning remains unsettled. Rooted in hypersensitive experience, the work inhabits a space of suspension, reflecting the fluid, unresolved nature of contemporary inner life.

lisaangevelez.com



Lisa Ange Velez, *Catch Smoke*, 2026, Oil on Canvas, 42 × 59.4 cm



Lisa Ange Velez, *Soul Scape*, 2026, Oil on Canvas, 54 × 183 cm

Monika Tkaczyk

Monika Tkaczyk is a London-based visual artist from Poland working across glass, light, and mixed media. Rooted in kiln-fired painted glass, her practice explores transformation, instability, and emotional perception through layered materials, reflection, and organic forms. Her process combines technical precision with unpredictability, allowing heat, chemistry, and light to shape the final work. While glass remains central to her practice, she increasingly expands into experimental sculptural and material-based works that move between object, light source, and symbolic form. Her work has recently been exhibited in galleries and international online exhibitions across the UK and Europe.

My practice explores states of becoming — where forms shift between emergence, fragmentation, concealment, and revelation. Working across kiln-fired painted glass, light, and organic materials, I create works shaped through layering, repeated firing, erosion, and material transformation. I am interested in instability rather than fixed outcomes. Light plays an active role within the work, continuously altering colour, depth, and perception. Recently, my practice has expanded beyond glass into sculptural forms that hold emotional and symbolic tension. Each piece exists as a threshold: suspended between structure and dissolution, fragility and persistence, control and surrender.

Artwork Description: This work exists between concealment and revelation, fragility and persistence. Formed from a raw cocoa shell and carrying an internal line of light, the piece explores transformation through organic material, texture, and illumination. Cowrie shells create a protective rhythmic surface suggesting memory, armour, and transition, while the hidden light within resists disappearance. The work does not present a fixed meaning, but instead holds a suspended moment — where pressure, fracture, and becoming coexist simultaneously.

monikatkaczyk.com



Monika Tkaczyk, *The Light That Survived*, 2026, Mixed natural materials — cocoa shell, cowrie shells, paper, gold leaf, connected light element, 29 × 18 cm

Mossamé

Mossamé is an artist based in London, UK. Their singular style of abstract illustration, conceived as an aid to mental wellbeing and informed by studies in the Fine Arts and Sciences, has since blossomed into collections of curiously beguiling, monochromatic dreamscapes. Stories without words transcending traditional form. mossamé's art quietly captivates; each piece is a gentle reminder of our connection to the natural world, and the growing importance of mindfulness in an attention-currency culture. Exhibited over recent months, mossamé's artworks have impressed curators and audiences from London to Tokyo and beyond.

My primary inspiration is the ineffable beauty of nature; precise and dynamic penstrokes, charged with poetic awareness, capture its elegance and spirit, respectively. While my illustrations pay reverent homage to the natural world, rather than simply reproducing its forms, I am more interested in reimagining them to create something unique, fluid and open to interpretation. From nature's eternally rich source of raw material I create the unfamiliar. I make the worldly otherworldly. In our pareidolic tendency to seek pattern in ambiguity, naturally we find things we recognise in these surreal inky sceneries. But anything discernible remains thrillingly irregular.

mossame.com



Mossamé, Fifty-one, 2025, Pencil and ink on paper, 21 × 29.7 cm



Mossamé, Forty-four, 2025, Pencil and ink on paper, 21 × 29.7 cm

Rosie Leventon FRSS

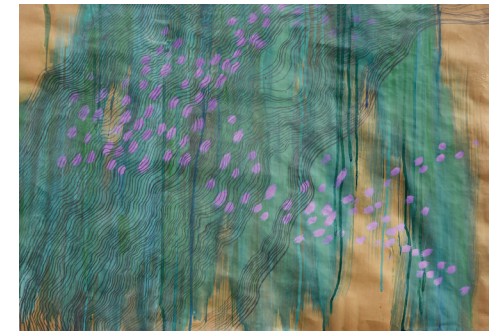
Rosie Leventon FRSS is a British artist working across sculpture, installation, environmental art and painting. She is a Fellow of the Royal Society of Sculptors and has exhibited widely in the UK and internationally. Her work has been shown at the UNESCO World Heritage Site Völklinger Hütte, Germany, Saatchi Gallery, Broomhill Sculpture Gardens, Trinity Buoy Wharf Drawing Prize, Atrium Gallery at Broadgate Centre, Serpentine Gallery, Royal College of Art, Kettle's Yard, the Royal Academy and Camden Art Centre. She received the Royal Society of Sculptors Spotlight Award in 2021 and the Mark Tanner Sculpture Award in 2002.

Using her love of the natural world and background in archaeology she creates work which re-appraises our historical provenance – Her psychological approach to the archaeology of an area implies that she will often peel back layers of modern day living to reveal things that have been hidden or forgotten. Her permanent outdoor environmental work which uses earth, stone, water, wood and planted trees, and in her paintings there may be a meditation on the vulnerability of natural things and are often grounded in a sensitive concern for our environment and how we use it.

rosieleventon.com



Rosie Leventon FRSS, Flowing With Green Mauve And Red, 2025, Acrylic and graphite on card, 86 × 111 cm



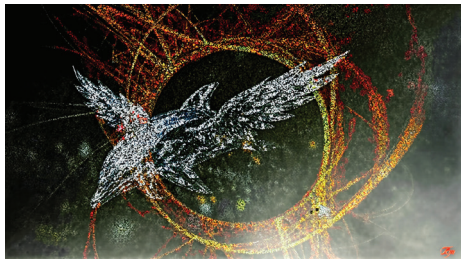
Rosie Leventon FRSS, Flowing With Mauve And Green, 2025, Acrylic and graphite on brown paper, 60 × 80 cm

Ryu Satake

Ryu Satake is a spatial artist and visual designer exploring the boundary between dissolution and emergence through immersive digital imagery. His works combine abstract biological forms, deep-sea structures, and fragmented spatial perception to create emotional environments suspended between reality and simulation. Through layered darkness, reflective textures, and luminous motion, SATAKE investigates instability, memory, and the transformation of existence in contemporary digital space. His practice moves fluidly between fine art, spatial visualization, and experimental media, creating works that evoke both silence and tension within expanded visual environments.

My work explores unstable states between form and disappearance. I create immersive visual environments where organic structures, fragmented light, and spatial distortion coexist in tension. Influenced by deep-sea ecosystems, digital decay, and liminal perception, the works visualize moments in which identity and matter dissolve into fluid space. Rather than presenting fixed narratives, I construct emotional atmospheres that invite viewers to experience uncertainty, silence, and transformation. Through digital image construction and spatial composition, I aim to reveal fragile connections between memory, existence, and the evolving nature of contemporary perception.

stkarctokyo.wixsite.com/my-site-1



Ryu Satake, Echoes Before Dissolution, 2026, Digital artwork, 1920 × 1080 px



Ryu Satake, Dissolving Horizon, 2026, Digital artwork, 1920 × 1080 px

Sang-a Oh

Sang-a Oh is a visual artist based in Seoul, South Korea. Her painting practice explores how relationships are perceived, misread, and continuously re-formed through silence, stillness, and emotional tension. Drawing on a background in documentary practice and journalism studies, she works through close observation of posture, distance, and atmosphere, focusing on moments that precede language.

Before Resonance and Moonquake — Human Interval explore unstable conditions of connection, distance, and perception. Through fluid abstraction and fragmented landscapes, the works examine how human presence becomes suspended within shifting emotional and spatial boundaries. Forms emerge and dissolve without fully settling, reflecting states of incomplete resonance and unresolved coexistence. Rather than presenting fixed identities or stable environments, the paintings inhabit transitional spaces where bodies, signals, and landscapes continuously blur into one another. Together, the works consider instability not as collapse, but as a condition of becoming—where connection remains fragile, delayed, and perpetually in formation.

linu22.myportfolio.com



Sang-a Oh, Before Resonance, 2026, Acrylic & Oil on Canvas, 105 × 81cm



Sang-a Oh, Moonquake Human Interval, 2025, Acrylic & Oil on Canvas, 145 × 112cm

Susan Williams

After a career teaching both undergraduates and post graduates, Susan Williams' practice is now centred on full time studio work in drawing and sculpture, consultancy and mentoring. She has exhibited nationally and internationally and has received Arts Council purchase awards and training bursaries, an A.G.B.I. Royal Academy award, the University of Northumbria Bronze Casting Fellowship and has been a member of the Royal Society of British Sculptors and regional Arts Council (awards to artists) advisor.

I use ceramic, lead, plaster and other traditional materials to create three-dimensional works which explore and test the relationship between highly resolved areas of form and more suggestive, evolving elements, aiming to create a viable, sculptural transition between the various states. The concept behind the work can most simply be described as the passage between the embryonic, the resolved and the decayed.

[pinterest/sgw0871](https://www.pinterest.com/sgw0871/)



Susan Williams, Imago, 2025, Ceramic, 25 cm



Susan Williams, Imago, 2025, Lead, 17 cm

Ndubuisi Princewill

Ndubuisi Princewill, born in 1993 in Rivers State, Nigeria, grew up between tropical rainforest and mangrove coasts of the Niger Delta. Drawn to nature and its visual narratives, he studied Materials and Metallurgical Engineering at the Federal University of Science and Technology, Owerri (SEET), then pursued art as a self-taught painter. Active since 2012 and a member of Omenka Ndi Imo Contemporary Art Organization, his work primarily acrylic, oil, graphite and charcoal, explores life's complexities, inspired by nature and music. Mentors include Onumaegbu Stanley and Kelvin Okafor. Currently working on the final pieces of the series fragments of resilience, and miniature paintings for Farsley Farmers market.

"Fragments of Resilience" is a series of mixed media works that translate moments from the artists life into layered, tactile compositions. Using paint, collage, and charcoal, I assemble memories of loss, love, and transformation into visual fragments that honour vulnerability as a source of strength. Repeated designs, cardinals and blooming flowers act as fragile but persistent emblems of renewal and care. The textured surfaces and saturated colour invite close looking, revealing scars and repairs as evidence of ongoing growth. These pieces are an invitation to witness private stories and to recognize beauty in imperfection: to see wounds not as endings but as sites of repair and possibility. Fragments of Resilience celebrates the journey of healing and the power of art as a means of expression, encouraging audiences to embrace their own narratives and find beauty in their pain and scars.

willzart.shop



Ndubuisi Princewill, Fragments of resilience I, 2023, Charcoal and Pastel on Pelican Paper, 60 x 91 cm



Ndubuisi Princewill, Fragments of resilience II, 2023, Charcoal and Pastel on Pelican Paper, 83 x 60 cm

Xixi Xu

Xixi Xu is a multidisciplinary artist based in the UK and graduated from the Royal College of Art. Before moving to London, she spent over a decade running a barbecue business, experiences that continue to shape her understanding of memory, labour and lived experience. Working across painting, printmaking and installation, she combines hand-drawing, layered imagery and mixed materials to explore unstable relationships between body, landscape and transformation.

My work develops from personal memories, lived experience and emotional states, translated through layered processes of drawing, printmaking and mixed media. Combining fragmented figures, landscapes and translucent materials, I explore unstable spaces between presence and disappearance. The works remain in continuous transformation, reflecting themes of memory, vulnerability and becoming.

[instagram/artist_xixi](https://www.instagram.com/artist_xixi)



Xixi Xu, Veil of Becoming, 2025, Acrylic- printmaking ink and mixed media on canvas, 180 x 280 cm



Xixi Xu, Dissolving Figure, 2025, Acrylic- printmaking ink and mixed media on canvas, 198 x 101 cm

Xusheng Yue

Xusheng Yue is a Chinese dance and performance artist based in the UK. Trained across Inner Mongolia, Beijing and the United Kingdom, Yue works between ethnic dance, contemporary movement and body-based performance. His practice explores emotion, belief, memory and the shifting relationship between body, time and space. Yue has performed across stages, television contexts, festivals and international cultural platforms in China, the UK, Singapore, France and South Korea. His recent work focuses on ritual movement, embodied transformation and the contemporary reinterpretation of traditional performance languages.

My practice uses the body as a site of memory, invocation and transformation. Through dance, mask, costume and movement, I explore how physical presence can carry emotion, belief and cultural memory beyond spoken language. Rather than presenting tradition as a fixed form, I approach it as a living material that can be reimagined through contemporary performance. My work often moves between ritual and abstraction, allowing the body to become a temporary vessel for unseen forces, personal experience and the passage of time.

Artwork Description: Mask, Invocation, and Becoming is a performance-based photographic work developed from Yue's original dance practice. Drawing on ritual movement, masked embodiment and states of transformation, the work explores the body as a vessel between human presence, ancestral memory and spiritual imagination. The image captures a moment where movement moves beyond representation and becomes an act of invocation. Between form and dissolution, the performer appears suspended between identity, ritual and becoming

Xushengyue.com



Xusheng Yue, Mask- Invocation and Becoming, 2025, Performance documentation photograph / digital image from original dance performance

Yun Wen

Yun Wen (b. 2000) is a photographer and visual artist born in China and based in London. Her practice uses photography and video to explore memory, perception, and lived experience through fragmented visual narratives and subtle emotional gestures. Positioned as an observer, she constructs open-ended visual propositions that resist fixed interpretation. Recent exhibitions and projects include *Between Stillness and Pulse* (London, 2025), and *We Meet in the Intervals* (London, 2026).

Yun Wen's practice explores unstable states between memory, presence, and emotional residue through staged photography and fragmented visual narratives. In *Pearl Necklace*, repetition, partial visibility, and suspended gestures create images that feel unsettled and in flux, reflecting experiences of absence, attachment, and departure. Familiar spaces become emotionally unstable, existing between presence and disappearance. Through fragmentation and ambiguity, the work resists fixed interpretation and engages with transitional states where forms loosen and meaning remains unresolved, reflecting the exhibition's focus on fluidity, dissolution, and the unstable nature of form.

wenwyun.com



Yun Wen, Pearl Necklace, 2026, Photography, 30 × 30 cm



Yun Wen, Pearl Necklace, 2026, Photography, 30 × 30 cm



Contemporary Art Collection

Unfixed: Between Form and Dissolution

Visual Arts Show

June 2026

All images are subjected to Copyright © by the artists.
Copyright © 2026 by Cista Arts Ltd. \ London.

All rights reserved.

Design by Cista Arts Studio.
Printed & bound in the United Kingdom.

www.cistaarts.com
info@cistaarts.com

SERVICES

CISTA ARTS offers the following services to artists, designers, buyers, collectors, and publishers: We would be delighted to discuss your projects. Please contact us at info@cistaarts.com.

CISTA ARTS OFFERS to Artists

Providing an online platform for artists to market their works.

Offering exhibition space for artists to display their artworks.

Presenting artists' works at art festivals, art fairs, and auctions.

Your Online Studio

CISTA ARTS offers professional support in creating an online platform to showcase your artworks. This platform will serve as a window in representing your artistic work to the whole world.

Find the Artwork You Want

CISTA ARTS offers locating and purchasing Middle-Eastern artworks of interest to clients.

Your CV & Portfolio

CISTA ARTS offers professional support in creating your CV & artistic portfolio to showcase your ability, experiences & artworks. This will help your work to get recognised.

Advisory Service to Architects

CISTA ARTS provides landscape designers and architects advice on suitable sculptures and site-specific artworks.

Art Lovers

CISTA ARTS provides a platform for clients interested in acquiring Middle-Eastern artworks.

Creative Workshop

CISTA ARTS Provides Creative workshops that can be delivered in school/college/community organisations, and online.

What Else?

Have we covered everything of interest to you? Please let us know if there are certain services which you may require, and which has not been covered here.

Publishing Your Work

Publication, online and in physical form, enables artists to showcase their artistic work, and gain enhanced recognition.

1:1 support and consultancy

We have various 1:1 online support and consultancy. Book a session now!

Advisory Service to Interior designers

CISTA ARTS provides advisory service to interior designers on selection of artworks and prints for commercial and private premises.

CISTA ARTS offers full support, from initial consulting on contents, images, page layout, cover design, and printing to marketing and distribution.

Our printing and publishing services encompasses artists' books, catalogues, and booklets.

OPPORTUNITIES

Virtual Solo Exhibition

OPEN CALL

Our Open Call is open to artists working across all mediums. We celebrate and aim to support artists to develop their career with each virtual exhibition.

Submit to our Open Call today!

info@cistaarts.com

www.cistaarts.com



APPLICATION REQUIREMENTS:

We are keen to learn about you! Please send us the following information, along with a sample of your work and an up-to-date CV:

- Contact information (full name, email, mobile)
- Details of the works (title, size, medium, year, price)
- Your artist statement/how your work relates

to the theme (No more than 100 words).

- Your biography (No more than 100 words).
- Links (your website, Facebook, Instagram)
- The sample of your work has to be up to 8 to 10 images.

Please include the above information in a PDF file and email it to info@cistaarts.com and quote 'Virtual Solo Exhibition' in the subject field.

BE A PUBLISHED ARTIST

Publication, online and in physical form, enables writer/artists to showcase their work, and gain enhanced recognition.

Cista Arts offer full support, from initial consulting on contents, images, edit and proofread, page layout, cover design, and printing to marketing and distribution.

Our printing and publishing services encompasses text book such as artists' books, novel, collection of short story, and poetry, catalogues, and booklets.

We would be delighted to discuss your projects. Please contact us via email.

info@cistaarts.com



OPPORTUNITIES

ARTIST ROOM RESIDENCY is a new space for artists who are working all around the world to have a new experience in between their day to day art practice and an online platform. Typically, an artist residency is a place - usually secluded- where visual artists, writers, filmmakers, dancers, or other creative professionals go to produce work for an extended amount of time. Artist-in-residence programs give artists the opportunity to live and work outside of their usual environments, providing them with time to reflect, research, or produce work. During a residency, artists can explore new locations, different cultures, and experiment with different materials.

Attending a traditional artist-in-residence program is not always an option for many artists. It can be expensive or too complicated, given the demands of daily life. For some, moving between borders might be a huge barrier; involving a long and costly visa process. In any case, nowadays, with only one click we can visit a city where we never been; or talk with someone, who, in a traditional way of life, we would never otherwise meet.

CISTA ARTS reverses the typical residency process. For a specified length of time, CISTA ARTS offers an online platform for artists - in any discipline. Rather than the artist traveling to a new place, they will open their studio to everyone, not only local people but also anyone who has access to the internet. This is a new experience for artists as well as art lovers. In other words, usually, artists only exhibited their final product to their audience, then, their studios as a place and the process of their creation are considered as a private space and manner. On the other hand, artists' studio as space, and the process of artwork creation and/or a daily studio life of an artist could be interesting for art lovers. Artists have to think about what they want to show and how they want to use this online



ART IDEA MEANS

platform to connect with new audiences. For instant, artists choose what they want to use; images, video, recorded description, blog, all or either! Maybe even something we haven't thought of yet!

CISTA ARTS welcomes submissions from artists - in any discipline- to be considered for the Artist Room Residency. If you are interested in being part of this program, please submit your biography, together with your portfolio and your residency plans (including a suggested timeline), to CISTA ARTS using the contact details below.

Decisions on suitability are made by a curatorial committee which meets on a monthly basis. We will let you know the outcome within one month of receiving your work.

If the decision is positive, CISTA ARTS will ask you to submit your complete proposal. CISTA ARTS will then draw up an agreement to be signed by both parties. As part of the agreement, we will undertake to promote your artwork across our site and through our social media channels.

If you would like to participate in CISTA ARTS Artist Room Residency program, please contact us at info@cistaarts.com

Cista Arts is an
interdisciplinary and
transcultural organisation,
aims to bring together artists
who work trans-nationally
across geographic borders of
the Middle East, Europe,
Asia and beyond.

"Çista Arts"
rêkxiraweyeke bo
nasandinî hunermendani Êran
u rojhelâtî nowerast taku bê
merj, berhemekanyan lewprî
sinûrekanewe bibînên.

تجمع سیستارترز فنانون یتختون بفنهم
الحدود، ومن الشرق الأوسط وخارجہ

سیستارترز پلتفرمی است برای معرفی
هنرمندان ایرانی و خاورمیانه تا بدون
هرگونه محدودیت آثارشان را فواتر از
مرزهای جغرافیایی به نمایش بگذارند



www.cistaarts.com
info@cistaarts.com